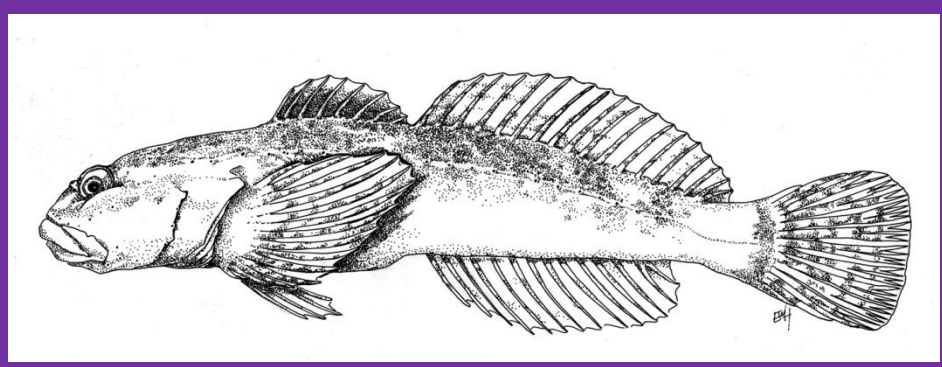
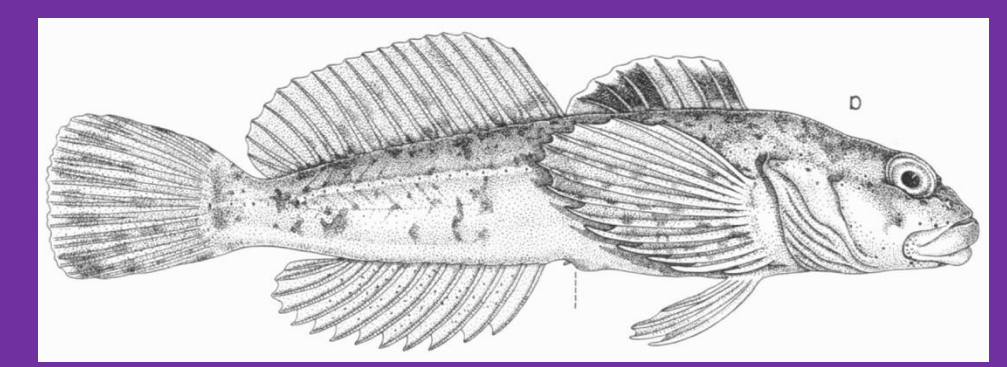


WANTED: Your help to understand the diversity of *Cottus* in western North America



Michael K. Young & Daniel J. Isaak

US Forest Service, Rocky Mountain Research Station, Missoula, MT & Boise, ID



"In our studies of the freshwater cottid fishes of western North America we have encountered four unnamed species. Our systematic review is still incomplete, but it is expedient to publish descriptions of the new species at this time. Our investigations on these fishes dictate considerable modification of current ideas on relationships. These may be implemented in part by the recognition of several species groups. [emphasis added]"

— Reeve Bailey & Carl Bond, 1963

The last major attempt to understand the diversity of sculpins in this region was over a half-century ago. With your assistance, we would like to renew the efforts to finish characterizing the sculpins of western North America.

1. . . Our investigations on these fishes dictate considerable modification of current ideas on relationships. . .

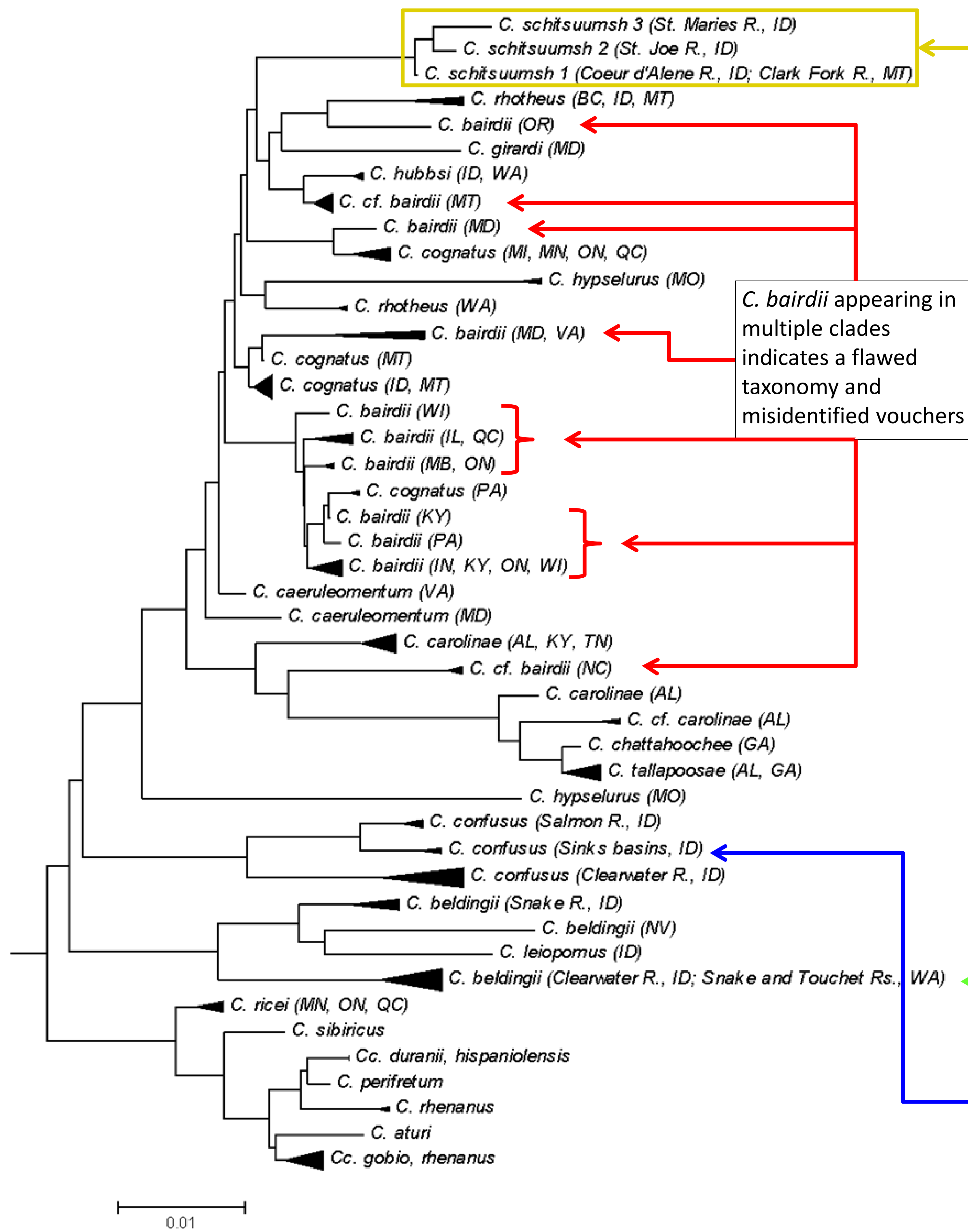
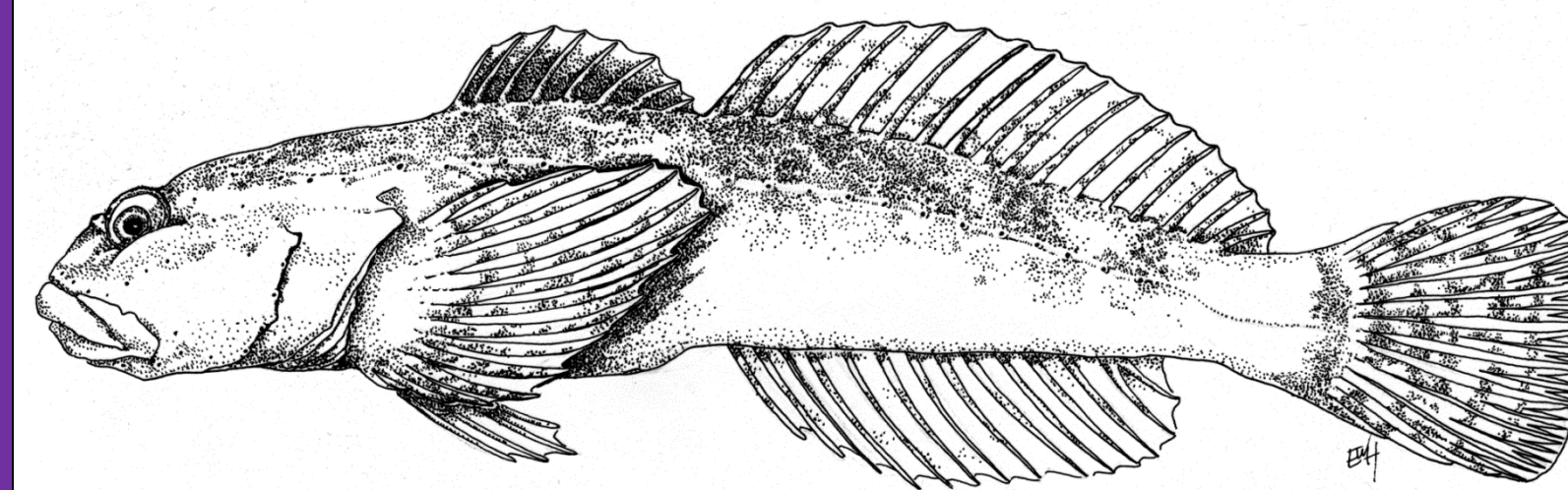


Figure 1. A maximum-likelihood phylogenetic tree based on sequences of cytochrome oxidase I.

2. . . but it is expedient to publish descriptions of the new species at this time. . .



Zootaxa 3755 (3): 241–258
www.mapress.com/zootaxa/
Copyright © 2014 Magnolia Press

Article
http://dx.doi.org/10.11646/zootaxa.3755.3.3
http://zoobank.org/urn:lsid:zoobank.org:pub:5147B3DB-9071-408B-A8D1-B3575ED5806E

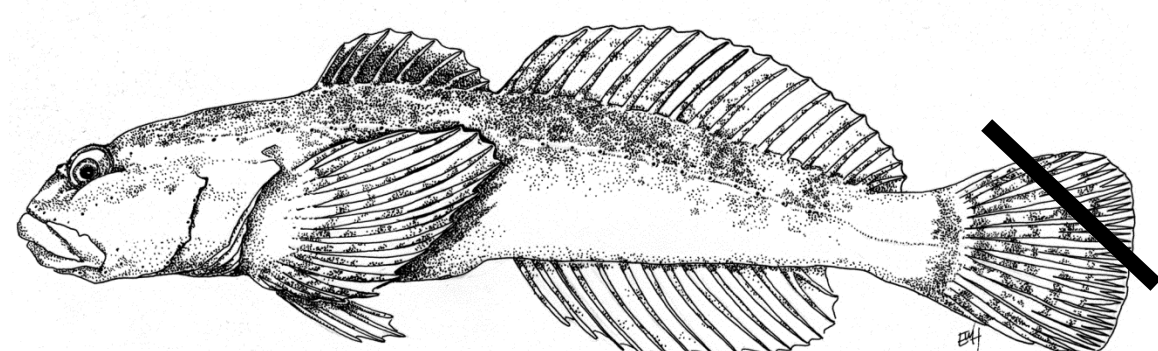
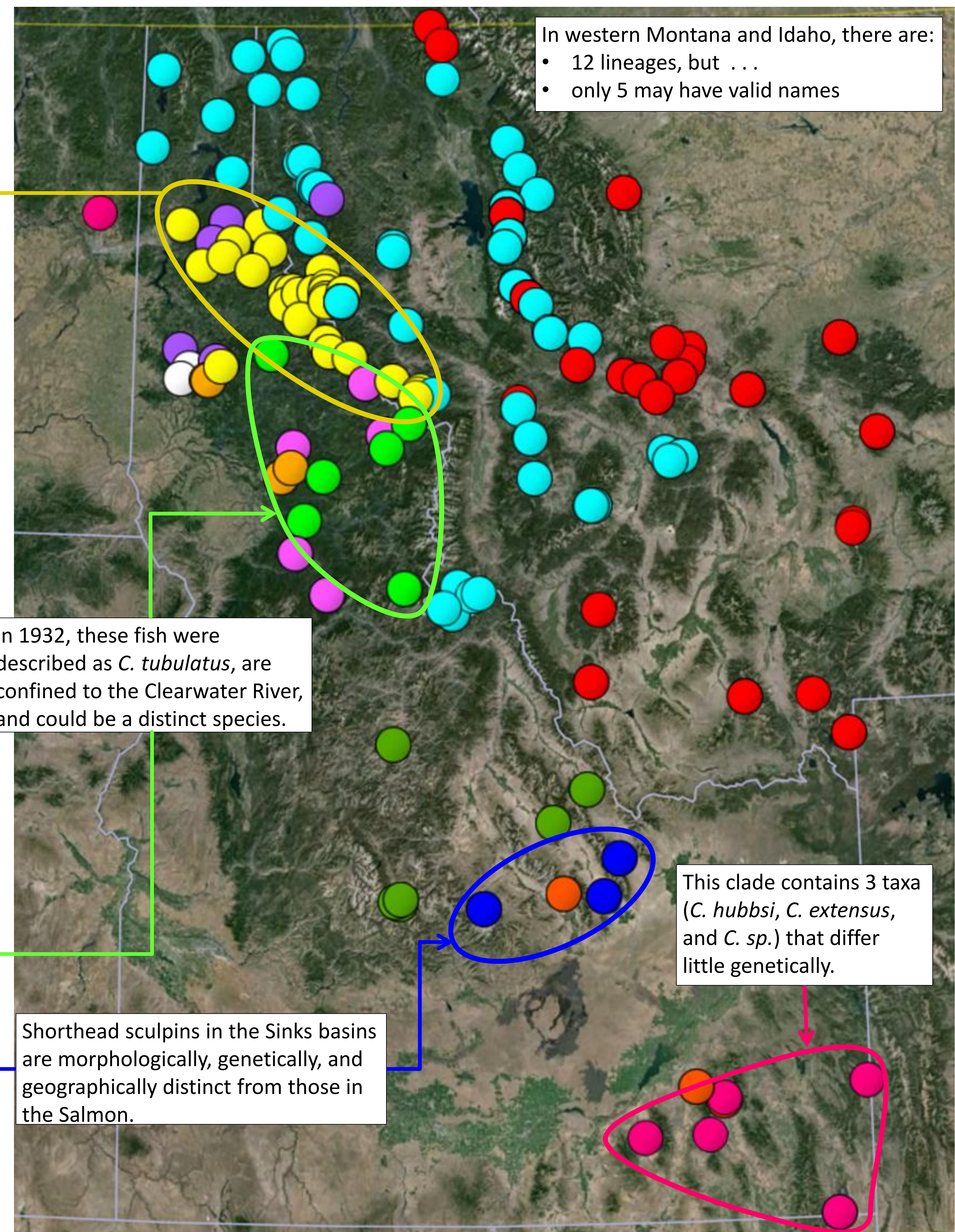
***Cottus schitsuumsh*, a new species of sculpin (Scorpaeniformes: Cottidae) in the Columbia River basin, Idaho-Montana, USA**

MICHAEL LEMOINE^{1,2}, MICHAEL K. YOUNG², KEVIN S. MCKELVEY², LISA EBY¹, KRISTINE L. PILGRIM¹ & MICHAEL K. SCHWARTZ²

¹Wildlife Biology Program, University of Montana, Missoula, Montana 59812, USA
²U.S. Forest Service, Rocky Mountain Research Station, Missoula, Montana 59801, USA
Corresponding author. E-mail: michael.l.lemoine@umconnect.umt.edu

This fish was initially described by Bailey & Bond (1963) as part of *C. confusus*, but the two species genetically differ from one another by 5.5%.

3. . . These may be implemented in part by the recognition of several species groups. . .



As part of an evaluation of DNA barcodes for identifying sculpins from the Columbia River basin and nearby basins, we seek 2-5 tissues of **all** species from **as many waters** as possible in Idaho, Oregon, Washington, and Wyoming. Can you help?

Data wanted: fin clips (on chromatography paper [provided], in coin envelopes, or in ethyl alcohol) or whole-body specimens (in ethyl alcohol), GPS data, date, and your name. To participate, contact Michael Young (mkyoung@fs.fed.us; 406-396-1209) or Dan Isaak (disaak@fs.fed.us; 208-373-4385)